

# World-wide Sales & Service

# TANABE

## Specialty Folder Gluer

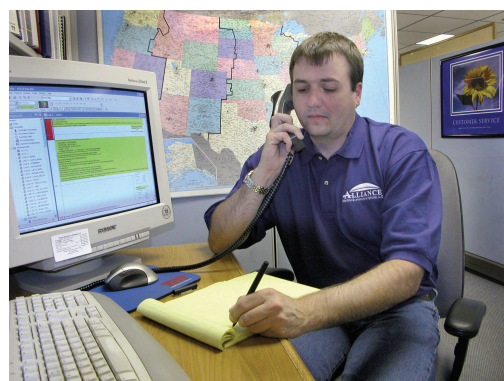
### Installation Services

We provide a wide array of installation services.

- ▶ Project Planning
- ▶ Project Management
- ▶ Installation Labor
- ▶ Machine Relocation
- ▶ Machine Commissioning

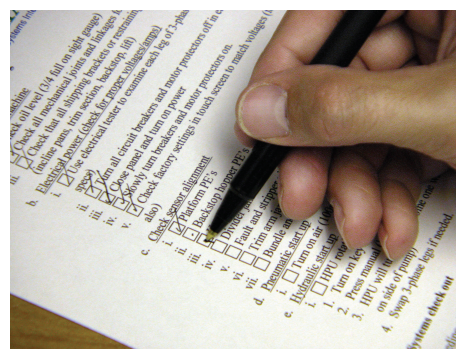
We have the experience to ensure on-time high-quality results.

**We**  
keep things  
**moving.**



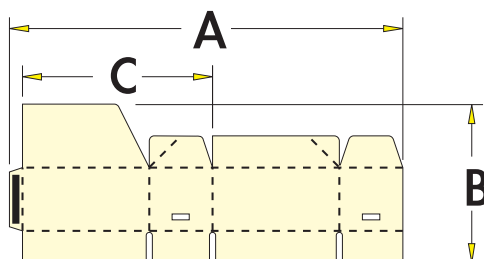
### Technical Assistance

Technical assistance is available twenty four hours, seven days a week. We do our best to assess any problem, promptly address it and develop a plan to keep you running. Just give us a call.



### Preventative Maintenance

Preventative maintenance reduces downtime and improves productivity. We can develop standard or custom preventative maintenance programs to ensure your Tanabe Specialty Folder Gluer stays in top running condition.



### Box Design

If you need help determining the optimum run speed for a new box style on your Tanabe Specialty Folder Gluer, give us a call and our technicians will assist you with the optimum set-up.

### Spare Parts

We carry an extensive range of OEM spare parts and can provide prompt delivery at the right price, whether it be for immediate installation or for inventory.

### Sales Representatives

If you would like additional information or a demonstration of our equipment, contact an Alliance sales representative at the number below or go to our web site ([www.alliancellc.net](http://www.alliancellc.net)) to locate one of our agents in your area.

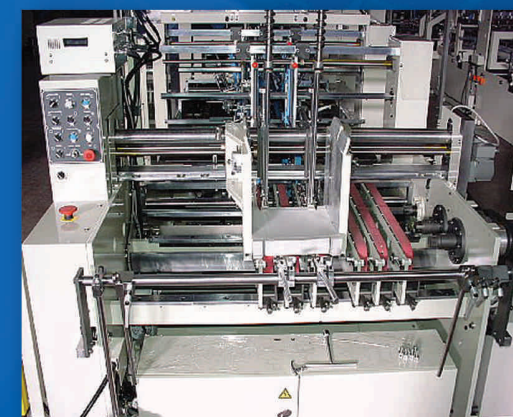
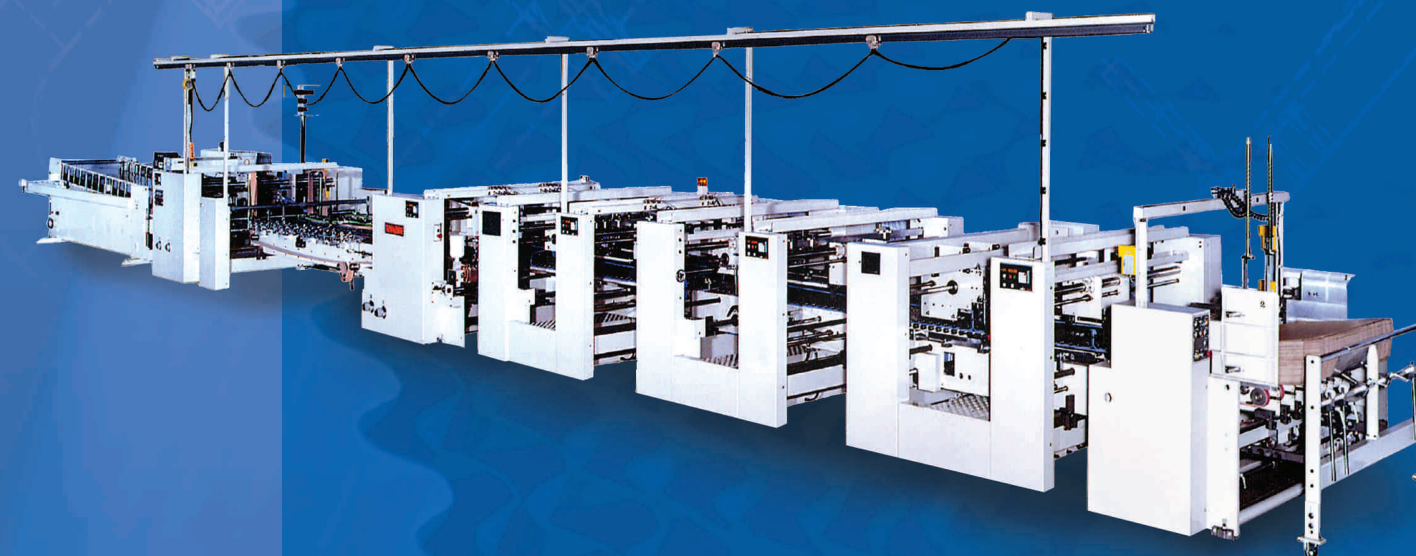


**EUROPE**  
Phone +31 (0)497 362500  
FAX +31(0)497 362510  
info.europe@alliancellc.net  
Muggenhool 3  
5531 RZ Bladel, The Netherlands

**AMERICAS**  
Phone 509 535-0356  
FAX 509 535-0399  
info@alliancellc.net  
5303 E. Desmet Avenue  
Spokane, WA 99212 USA

[www.alliancellc.net](http://www.alliancellc.net)

Prefeeders - RDC Stackers - Specialty Folder Gluers - Load Formers (Palletizers) - Conveyors  
Robotics - Bundle Handling Equipment - Bundle Separators - Pallet Handlers - Counter Ejectors  
Stretch Wrappers - Taping Units - Glue Preparation Systems - Stack Handling Equipment



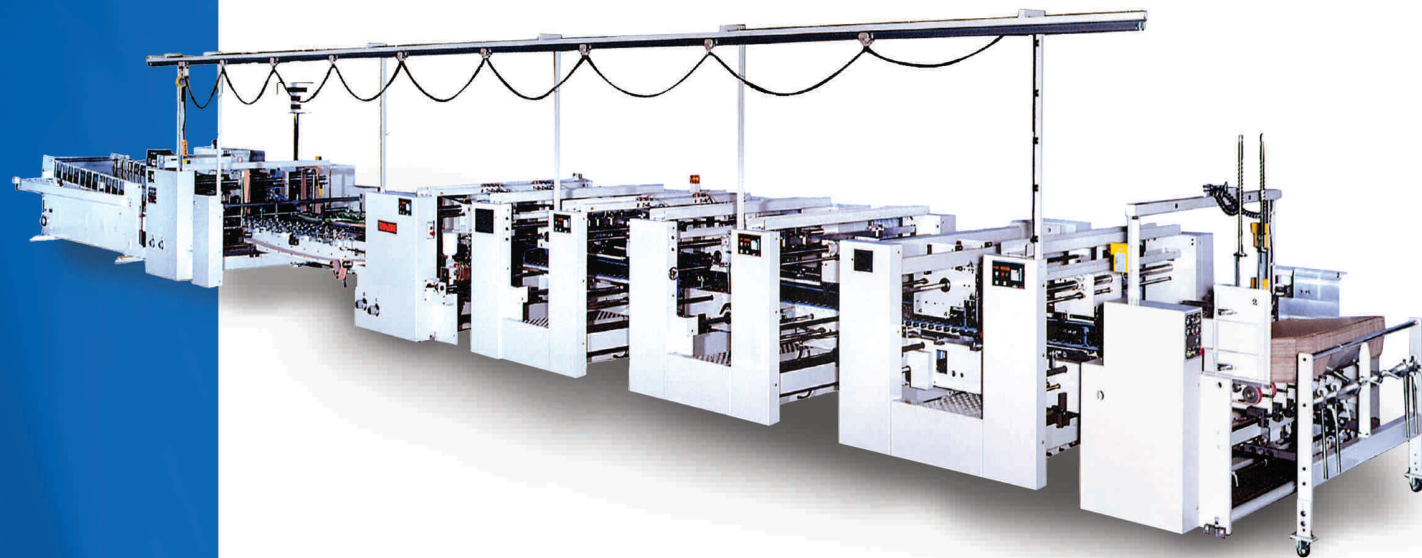
**We**  
keep things  
**moving.**



### Modular Design for Maximum Flexibility

The Tanabe is flexible and has a wide range of accessories to allow production of the most challenging box designs.

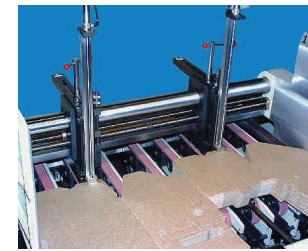
- ▶ Double Feeder
- ▶ Straightener
- ▶ Inlet-Feeder
- ▶ Auto-set Control System
- ▶ Special Application Widths
- ▶ Factory Network Communications
- ▶ 12 Accessible Gluing Channels
- ▶ New Technological Developments



### Box Styles

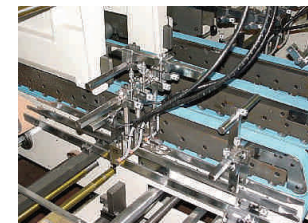
- ▶ Four Corner Trays, Infold & Outfold
- ▶ Six Corner Trays, Infold & Outfold\*
- ▶ Reinforced Hand Holds
- ▶ Autobottoms
- ▶ Displays
- ▶ Full Flap Bottom
- ▶ Straight Line
- ▶ Partition Boxes
- ▶ Double Wall
- ▶ Multi-Cell Boxes
- ▶ Other Styles\*

\* Additional tooling kit may be required.



### Feeder Control

A computer controls the positioning of side guides, feed gates and feed supports. The bottom friction feed (with suction assistance) and constant pressure device ensure consistent feeding and the control of warped board and irregular shaped blanks.



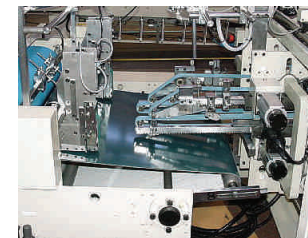
### Glue Control

The glue unit controls glue application based on data transmitted by the main computer. A central tank pneumatically feeds PVA (emulsion) adhesive to individual nozzles.



### Back Fold Control

Specially designed back fold finger sections are driven by servo motors. The automatic computer control positions back fold fingers on all machines larger than the 1700 model.



### Trombone Control

The electronic speed control ensures a constant shingle in the compression section. It also controls the trombone and compression section according to the length of the finished cases. This section is fitted with an automatic jam stop.



### Squaring Section

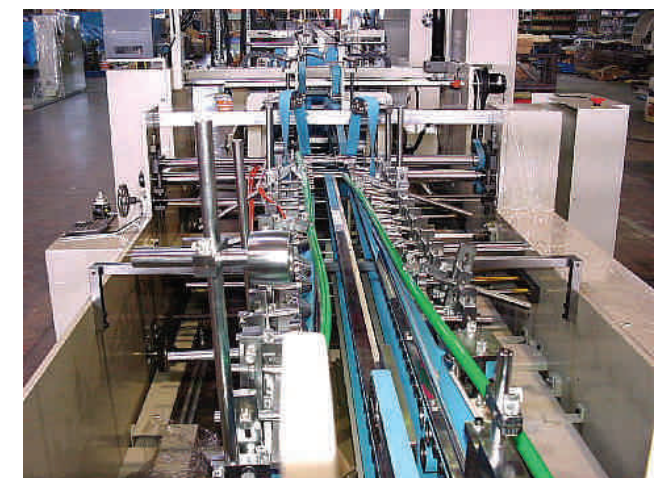
The squaring unit is adjustable for varying shapes of boxes. The unit's electronic control keeps a constant height in the squaring hopper and enables high speed operation.



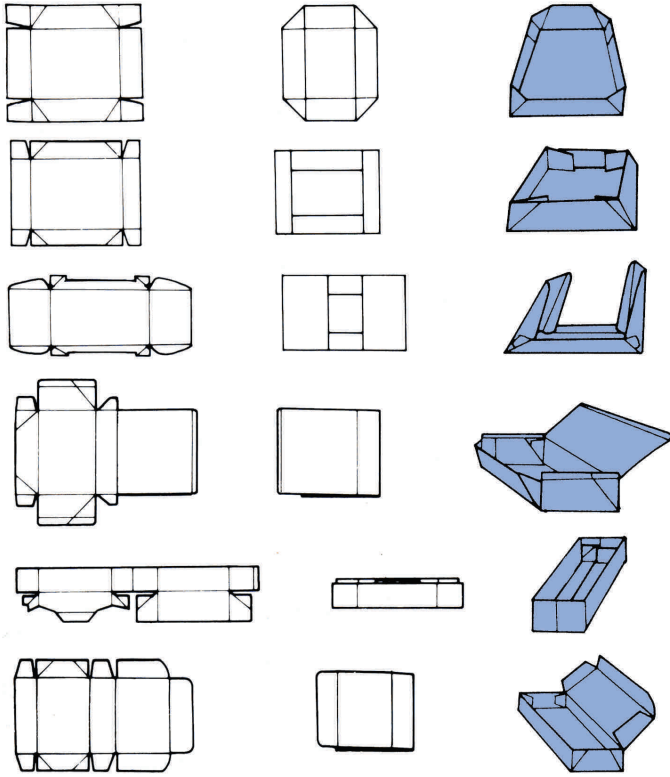
### Main Computer Control

The operator selects the type of box indicated on the display then enters the blank sizes. The data is processed automatically and transmitted to the individual sections for board control.

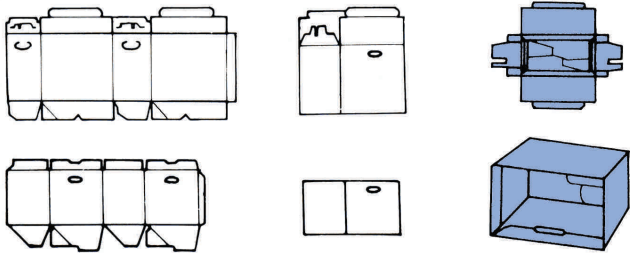
**We**  
keep things  
**moving.**



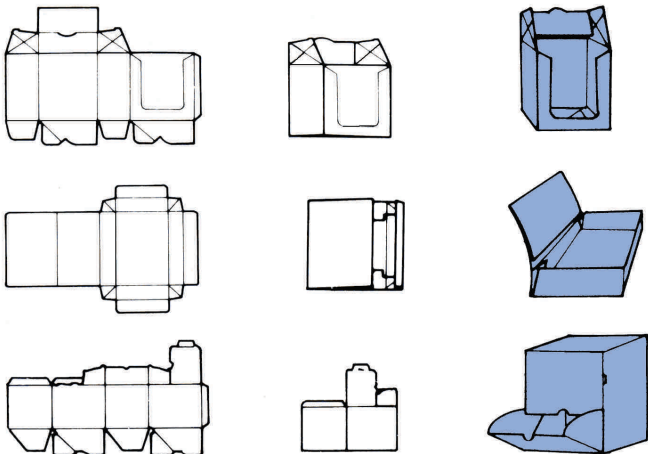
## Four Corner Trays, Infold & Outfold



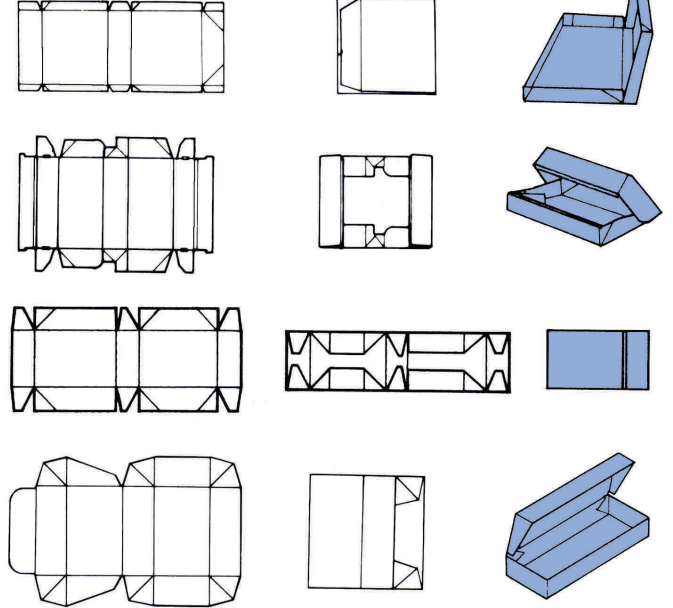
## Reinforced Hand Holds



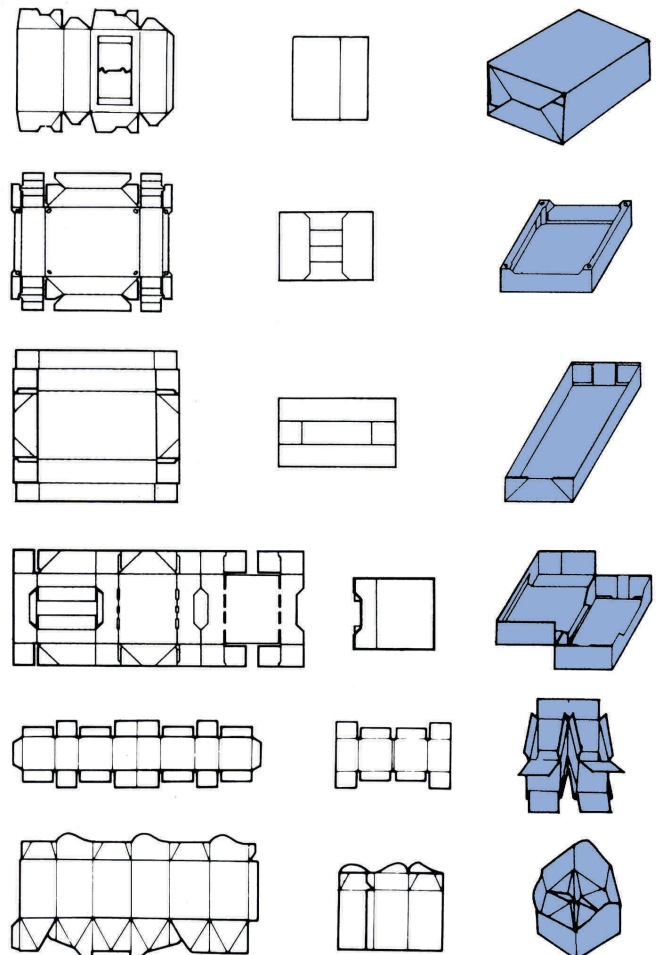
## Displays



## Six Corner Trays, Infold & Outfold \*

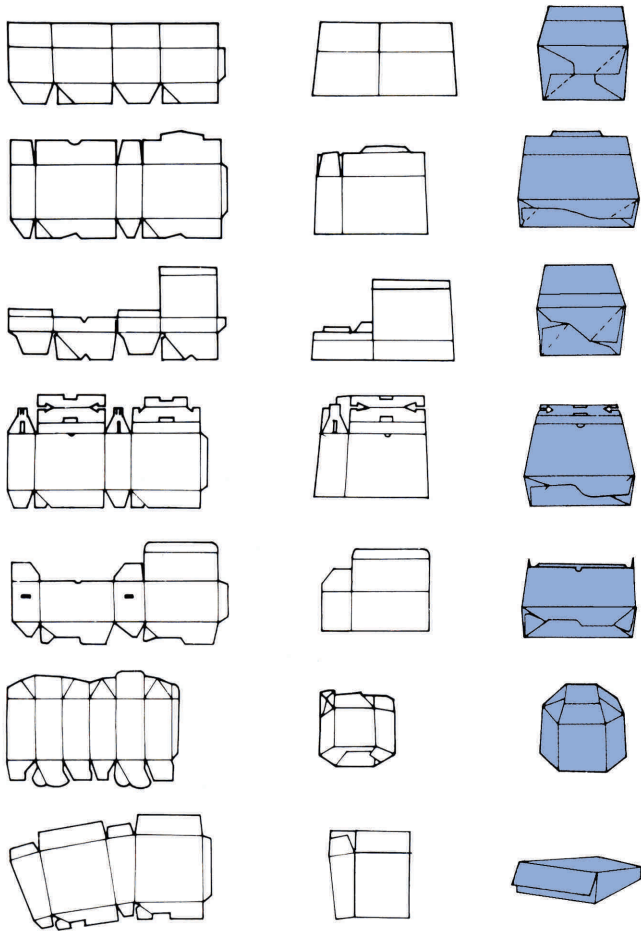


## Other Styles \*

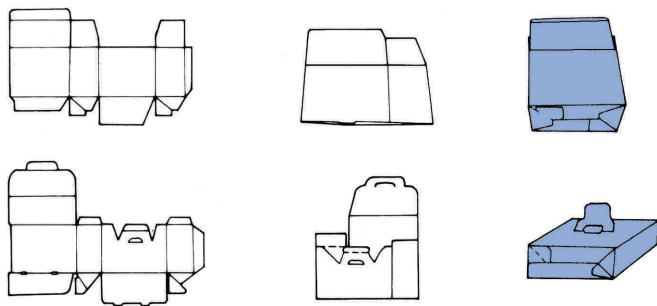


\* Additional tooling kit may be required.

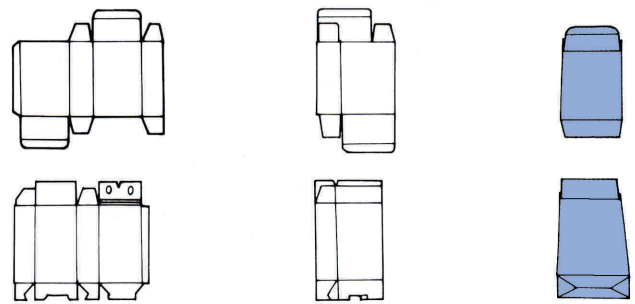
## Autobottoms



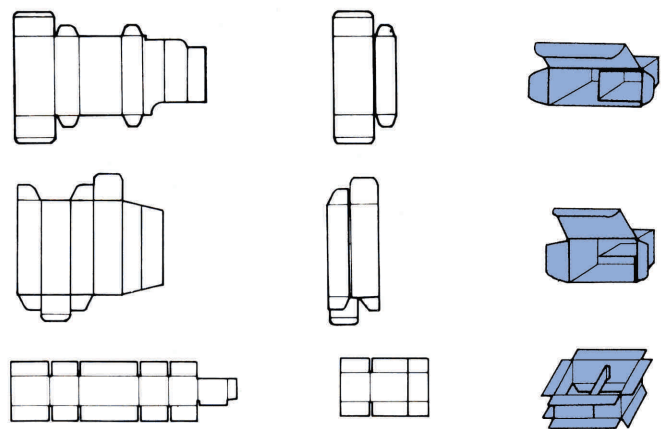
## Full Flap Bottom



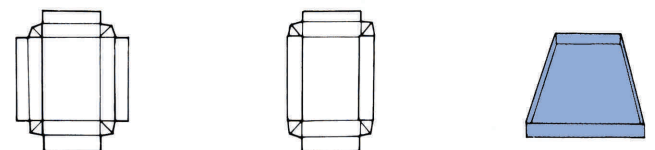
## Straight Line



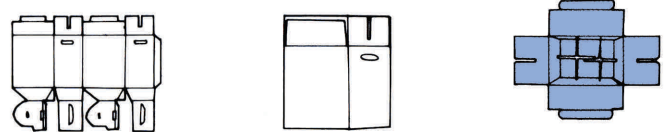
## Partition Boxes



## Double Wall



## Multi - Cell Boxes



**EUROPE**  
 Phone +31 (0)497 362500  
 FAX +31(0)497 362510  
 info.europe@alliancellc.net  
 Muggenhool 3  
 5531 RZ Bladel, The Netherlands

**AMERICAS**  
 Phone 509 535-0356  
 FAX 509 535-0399  
 info@alliancellc.net  
 5303 E. Desmet Avenue  
 Spokane, WA 99212 USA

# Specifications (Metric)

# TANABE

## Blank Sizes



Model	Max. mm	Min. mm
1250	1250 x 700	270 x 70
1450	1450 x 800	320 x 100
1700	1700 x 1000	380 x 160
1900	1900 x 1000	510 x 160
2300	2300 x 1000	510 x 160
2800	2800 x 1200	510 x 160
3000	3000 x 1600	510 x 160
3200	3200 x 1600	510 x 160

## Specialty Folder Gluer

Model	Belt Speed	Power Supply	Machine Weight	Machine Length	Machine Width
1250	250 m/min	38 kW	10,000 kg	11,500 mm	2,450 mm
1450	250 m/min	50 kW	13,100 kg	13,200 mm	2,775 mm
1700	250 m/min	50 kW	13,500 kg	13,200 mm	3,025 mm
1900	200 (250) m/min	50 kW	16,000 kg	14,200 mm	3,225 mm
2300	200 (250) m/min	50 kW	16,700 kg	14,200 mm	3,625 mm
2800	200 (250) m/min	50 kW	17,650 kg	14,800 mm	4,125 mm
3000	200 (250) m/min	50 kW	17,800 kg	14,800 mm	4,325 mm
3200	200 (250) m/min	50 kW	17,900 kg	14,800 mm	4,825 mm

## Conveyor Section

Model	Belt Width	Length of Section	Machine Weight	Length of Total Unit	Width of Total Unit
700	700 mm	3,600 mm	1,800 kg	5,300 mm	1,190 mm
900	900 mm	3,900 mm	3,630 kg	6,100 mm	1,775 mm
1000	1000 mm	5,400 mm	3,730 kg	7,800 mm	1,920 mm
1200	1,200 mm	6,000 mm	5,200 kg	8,600 mm	2,130 mm
1500	1,500 mm	6,000 mm	6,000 kg	8,600 mm	2,430 mm
1750	1,500 mm	6,000 mm	7,000 kg	8,600 mm	2,680 mm



## Blank Sizes

Model	Max. (in)	Min. (in)
1250	49.9 x 27.6	10.6 x 2.8
1450	57.1 x 31.5	12.6 x 3.9
1700	66.9 x 39.3	15.0 x 6.3
1900	74.8 x 39.3	20.1 x 6.3
2300	90.6 x 39.3	20.1 x 6.3
2800	110.3 x 47.3	20.1 x 6.3
3000	118.2 x 63.0	20.1 x 6.3
3200	126.0 x 63.0	20.1 x 6.3

## Specialty Folder Gluer

Model	Belt Speed	Power Supply	Machine Weight	Machine Length	Machine Width
1250	820 ft/min	38 kW	22,000 lbs	453"	97"
1450	820 ft/min	50 kW	28,820 lbs	520"	110"
1700	820 ft/min	50 kW	29,700 lbs	520"	119"
1900	656 ft/min	50 kW	35,200 lbs	560"	127"
2300	656 ft/min	50 kW	36,740 lbs	560"	143"
2800	656 ft/min	50 kW	38,830 lbs	583"	163"
3000	656 ft/min	50 kW	39,160 lbs	583"	171"
3200	656 ft/min	50 kW	39,380 lbs	583"	190"

## Conveyor Section

Model	Belt Width	Length of Section	Machine Weight	Length of Total Unit	Width of Total Unit
700	27.6"	141.7"	818 lb	209"	47"
900	35.4"	153.5"	7,986 lb	240"	70"
1000	39.4"	212.6"	8,206 lb	307"	76"
1200	47.2"	236.22"	11,440 lb	339"	84"
1500	59.1"	236.22"	13,200 lb	339"	96"
1750	59.1"	236.22"	15,400 lb	339"	106"